



PHOTO P PEITT
S2S PRODUCTIONS

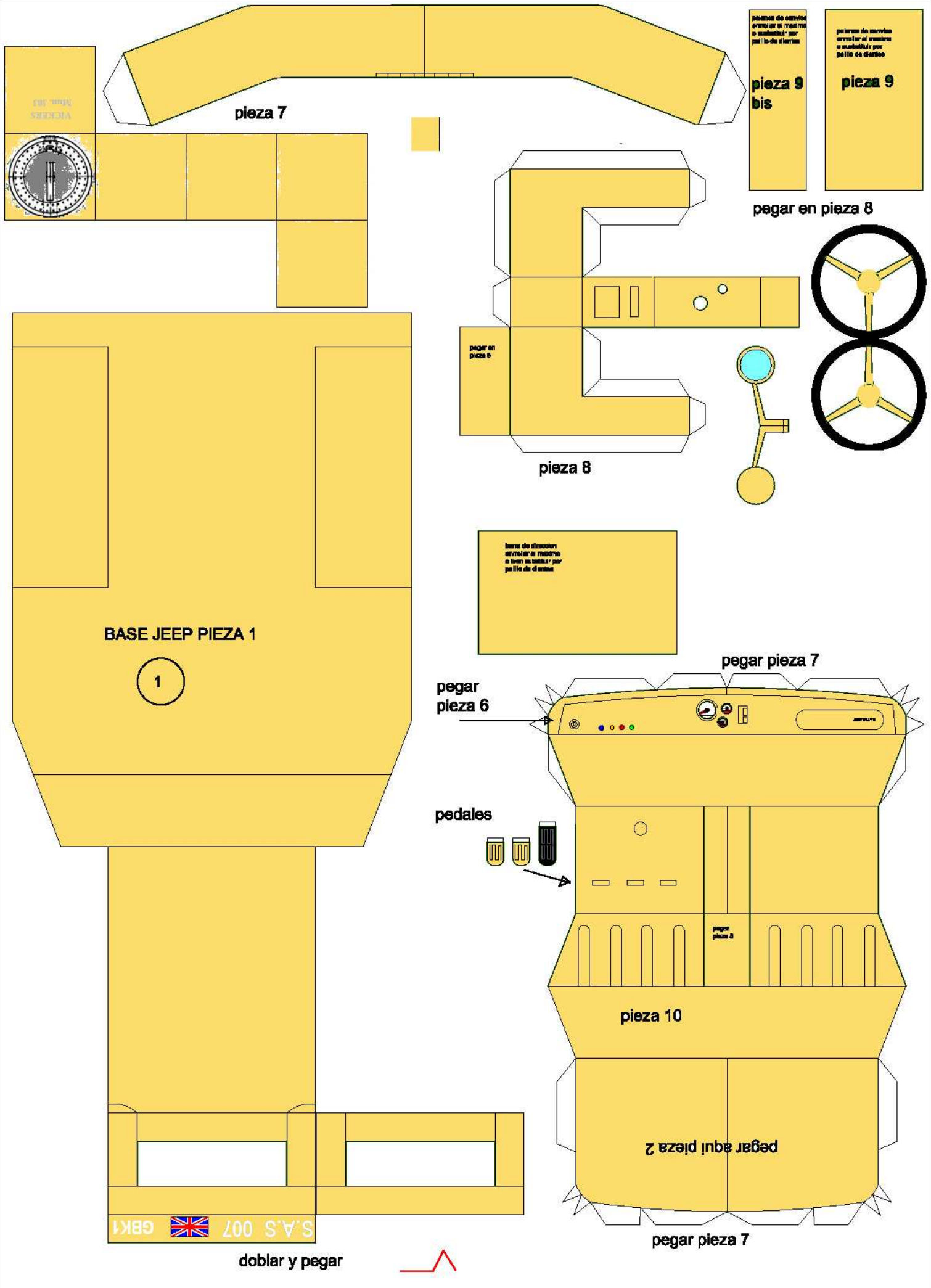
JEEP DESERT RAT'S

1942

PAR DARK VADOR

SUR UNE BASE DE TONI MAURICIO

ECH: 1/17



pestañas de servicio
enterrar al montar
o sustituir por
pallitas de dientes

pestañas de servicio
enterrar al montar
o sustituir por
pallitas de dientes

pieza 9
bis

pieza 9

pieza 7

pegar en pieza 8

pegar en
pieza 6

pieza 8

pestañas de servicio
enterrar al montar
o bien sustituir por
pallitas de dientes

BASE JEEP PIEZA 1

1

pegar pieza 7

pegar
pieza 6

pedales



pegar
pieza 3

pieza 10

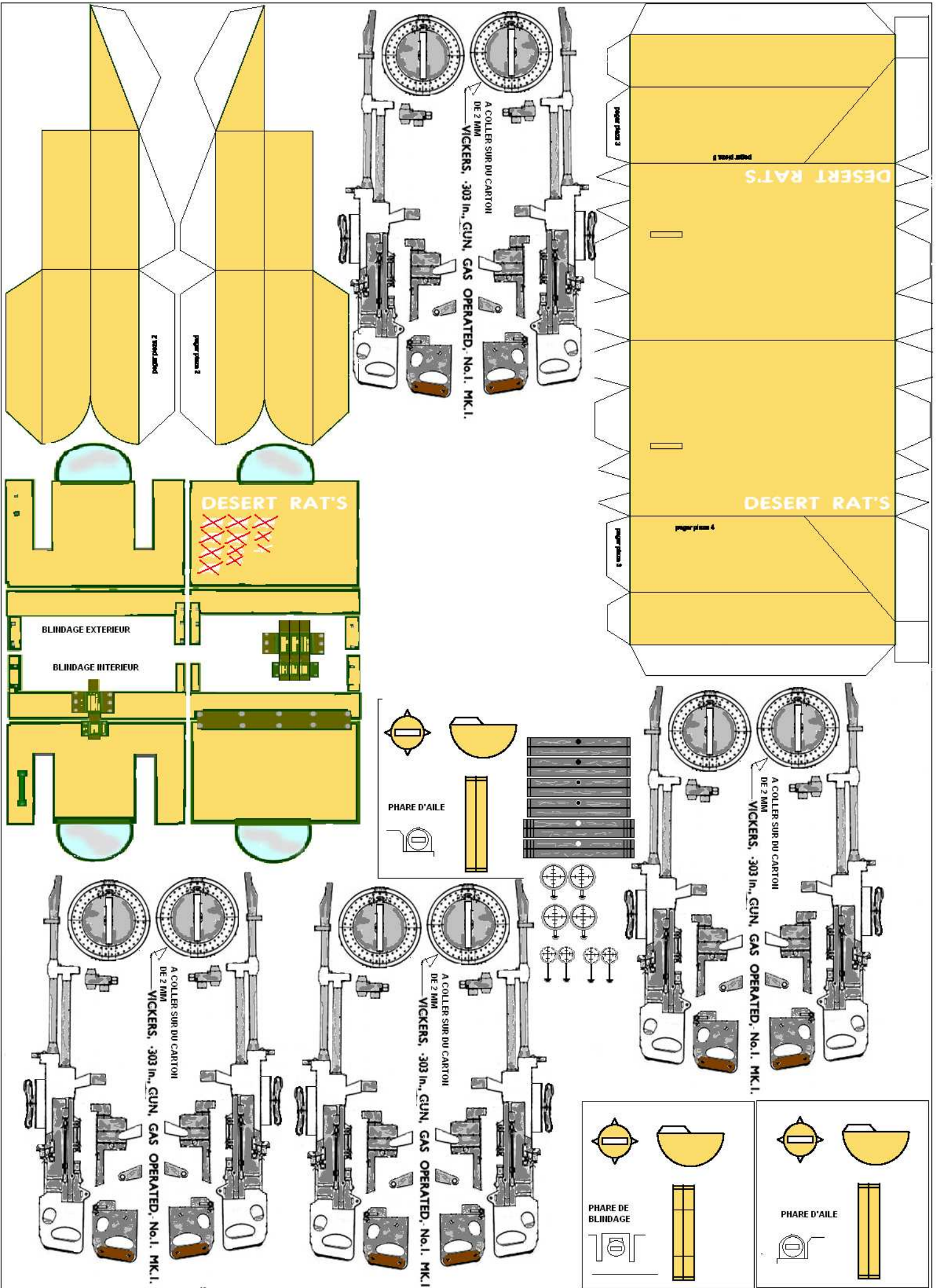
pegar aquí pieza 2

pegar pieza 7

doblar y pegar



S.A.S 007  GBK1



piezas 14 y 15,
pegar por dentro de
hueco de ruedas
traseras

pieza 13
guardabarros interno
izquierdo

pegar pieza 13

cortar ✂

pegar aquí al exterior

pieza
11

pegar
en base
1

pegar aquí pieza 8

pegar aquí al interior

cortar ✂

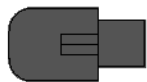
pegar pieza 12

pieza 12
guardabarros interno
derecho

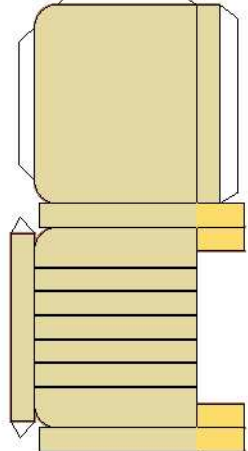
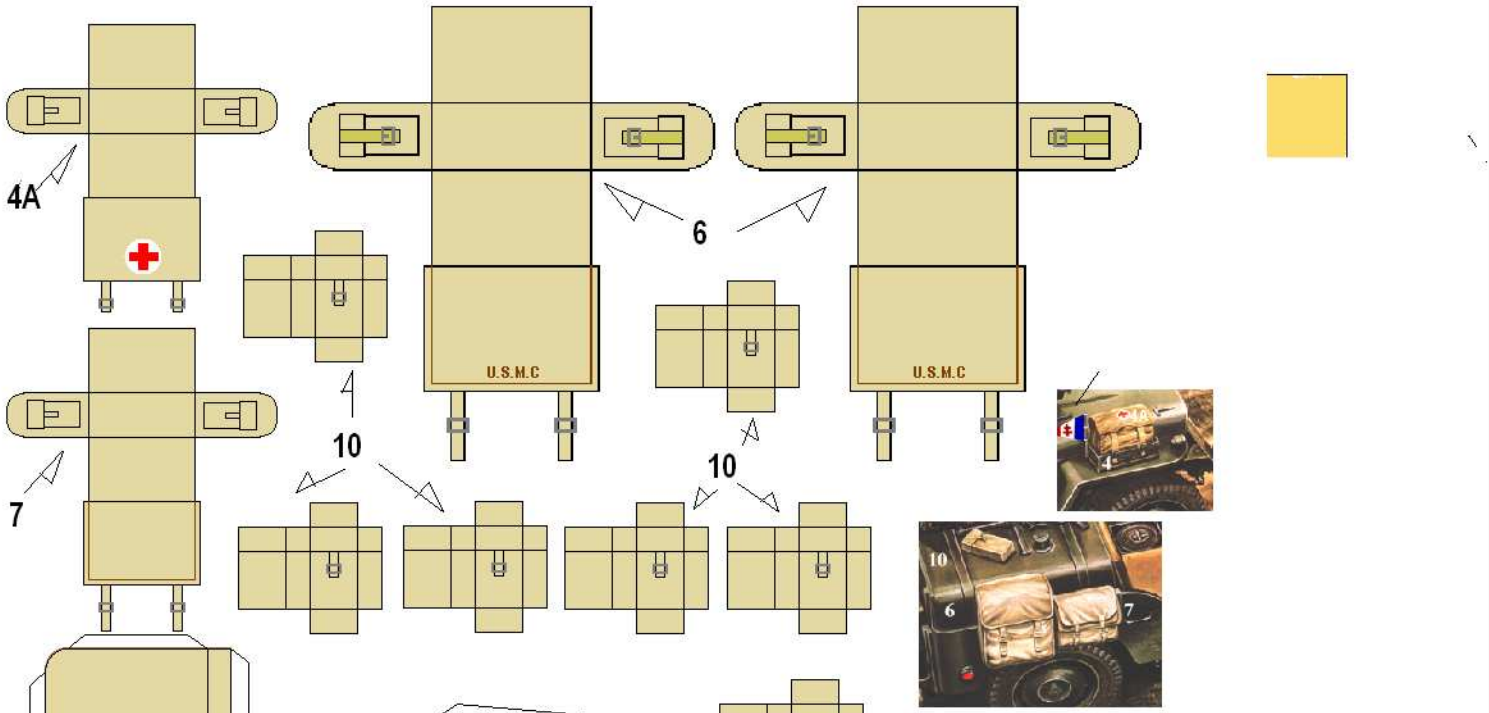
S.A.S 007

 GBK1

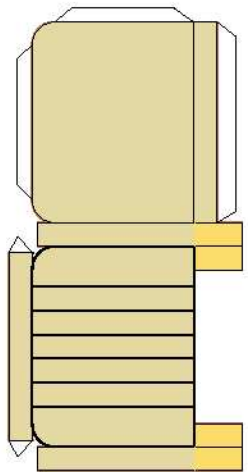
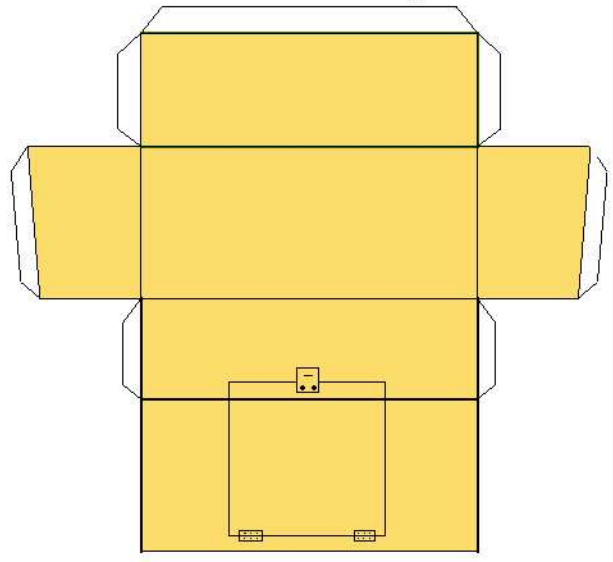
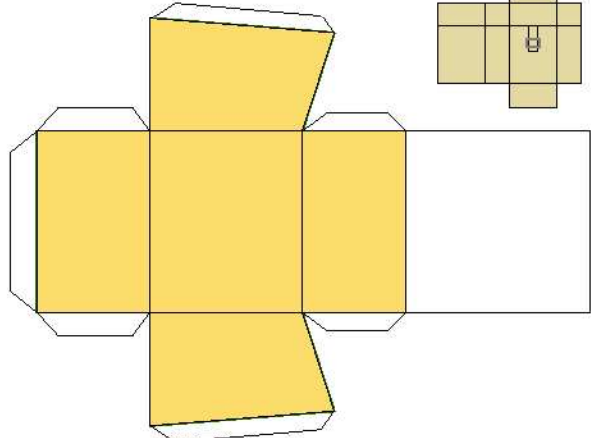
piezas 16 y 17
paragolpes traseros



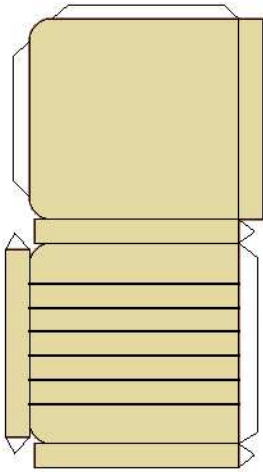
pala, pegar en palillo de
dientes y colocar en lateral
según foto



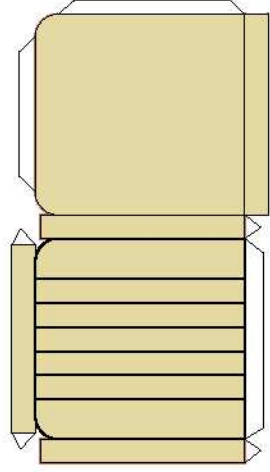
respaldo



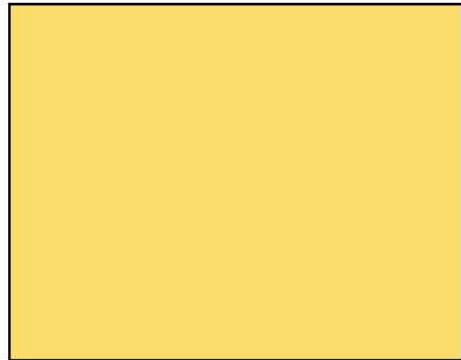
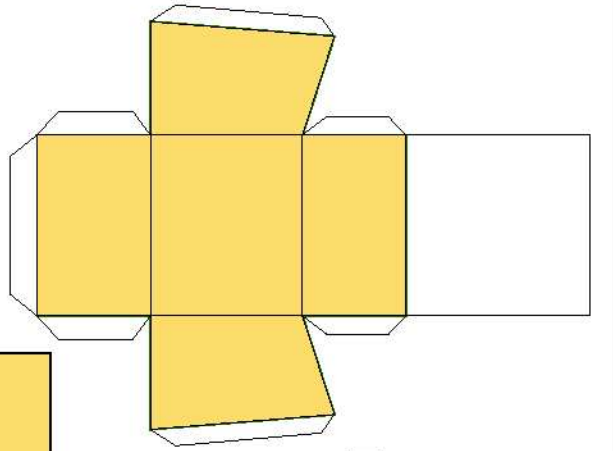
respaldo



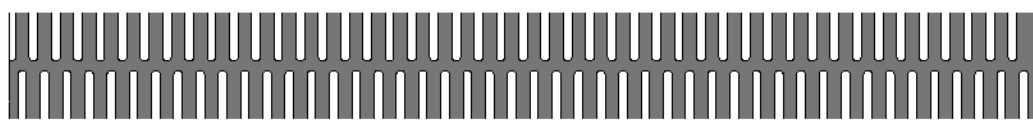
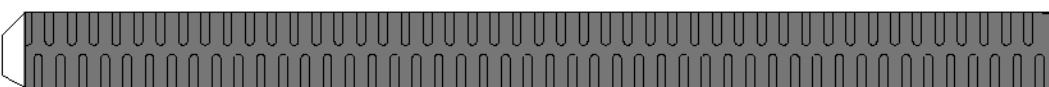
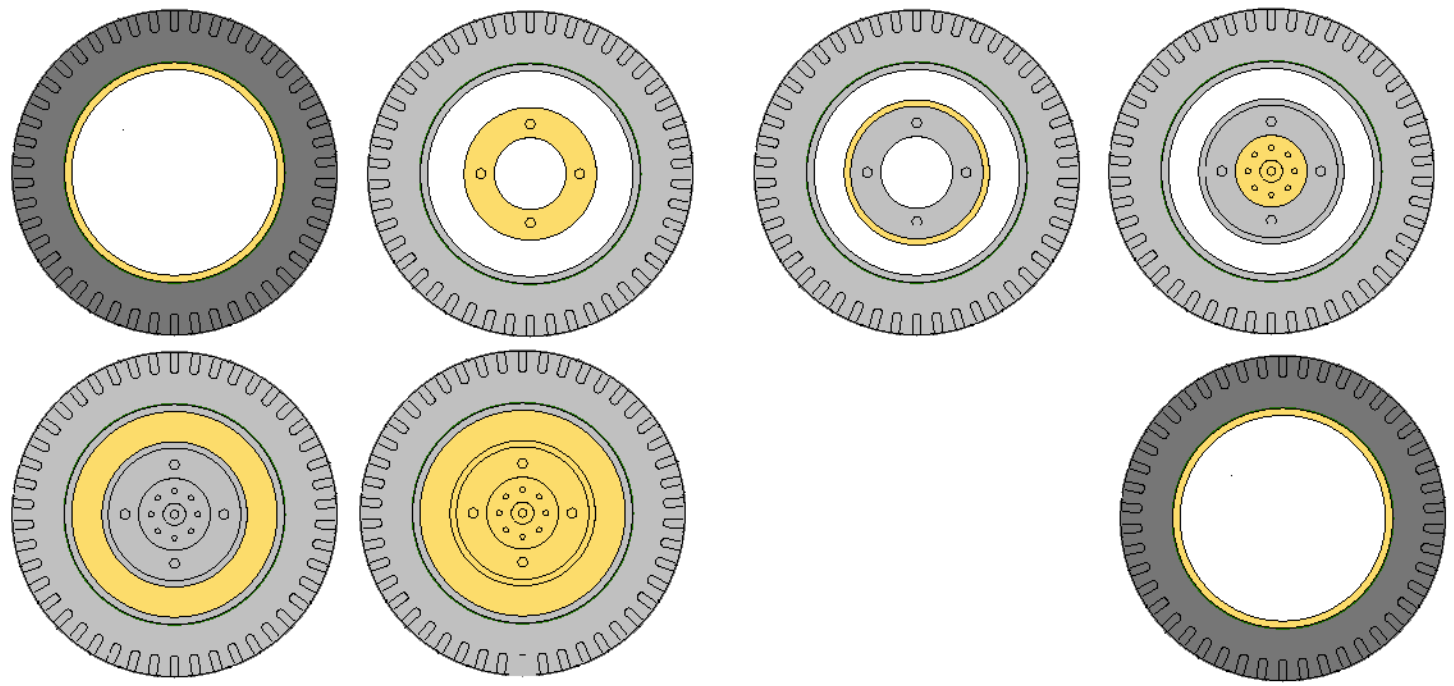
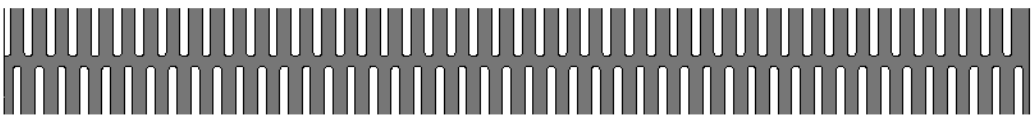
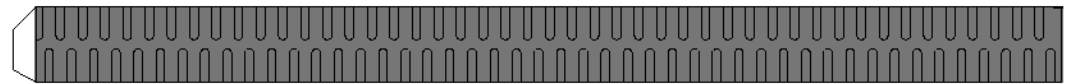
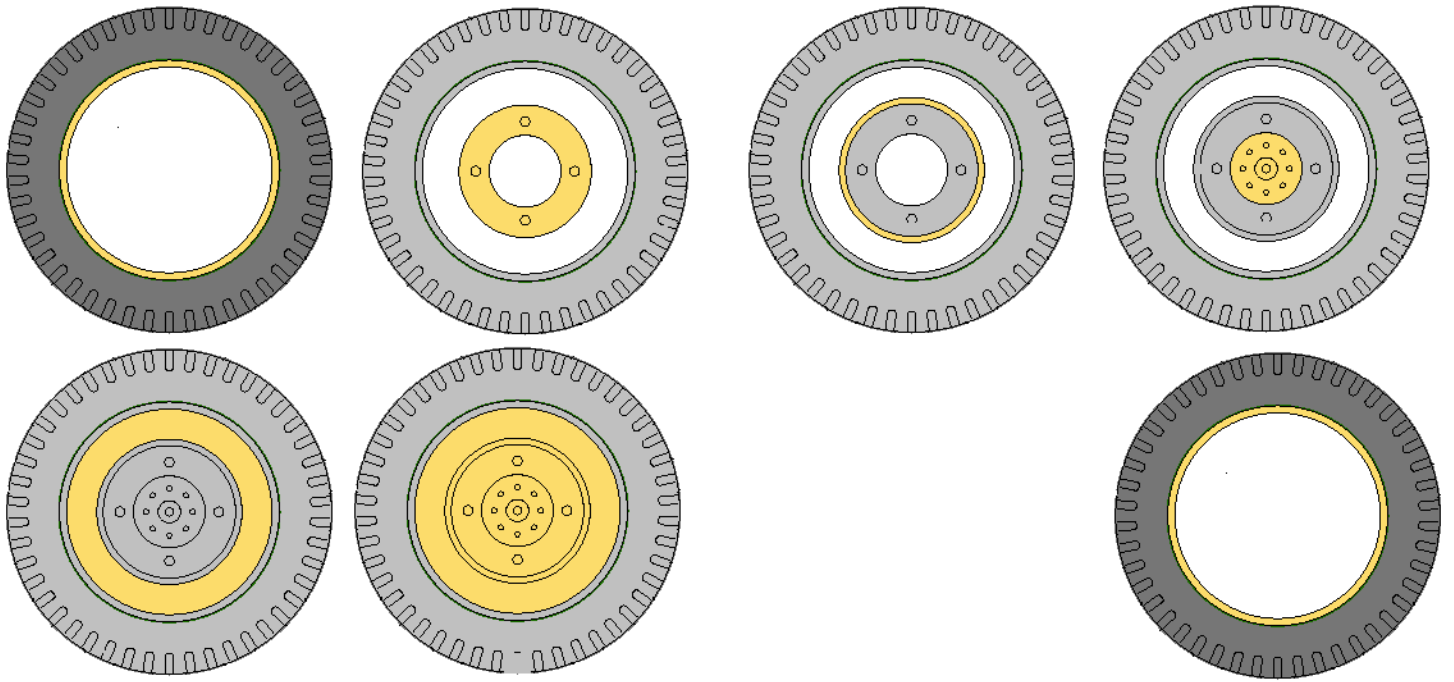
asiento

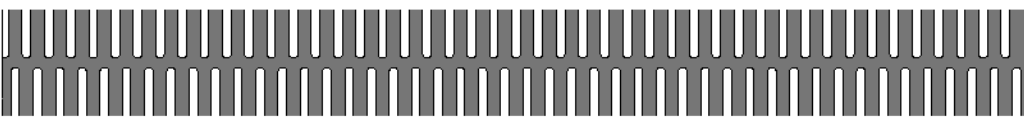
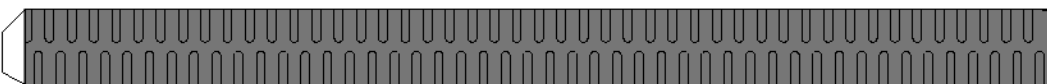
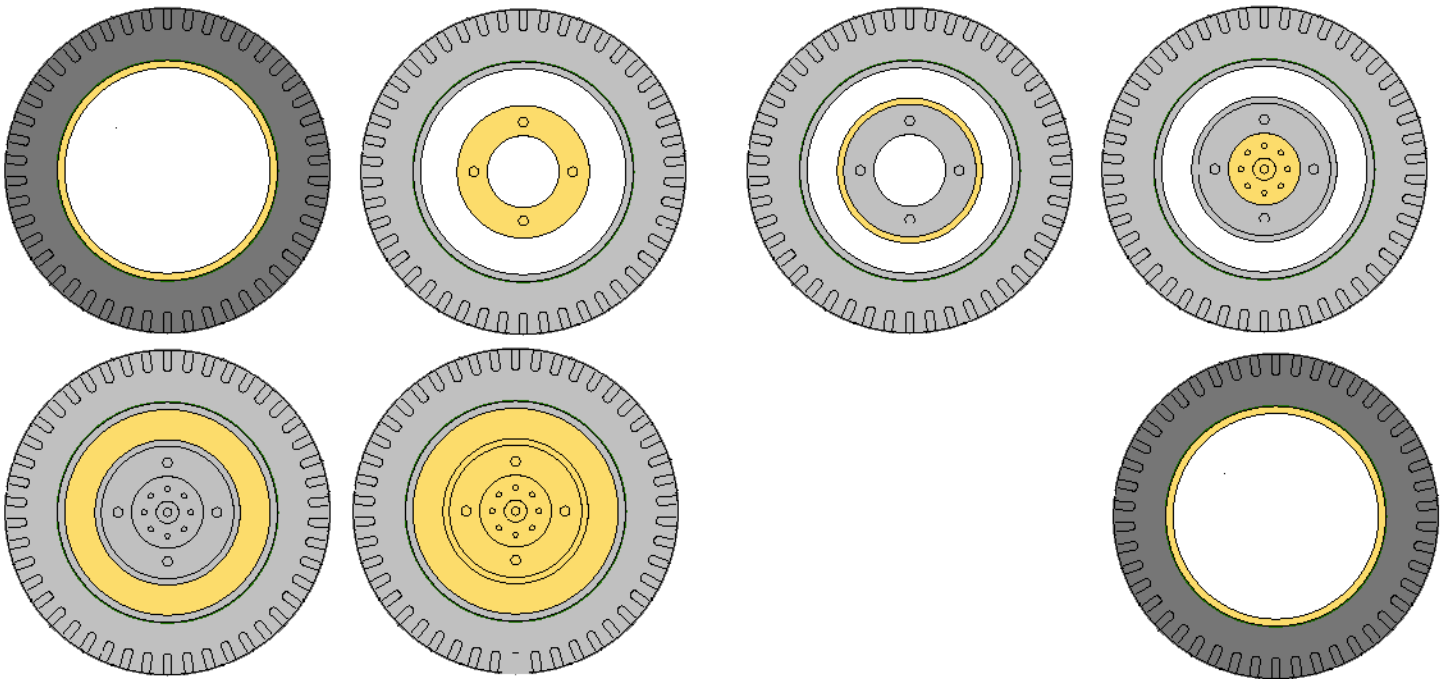
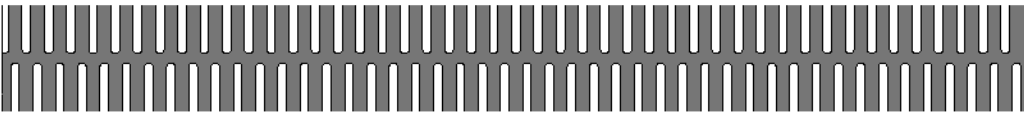
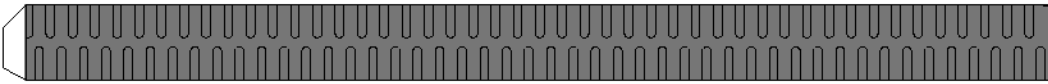
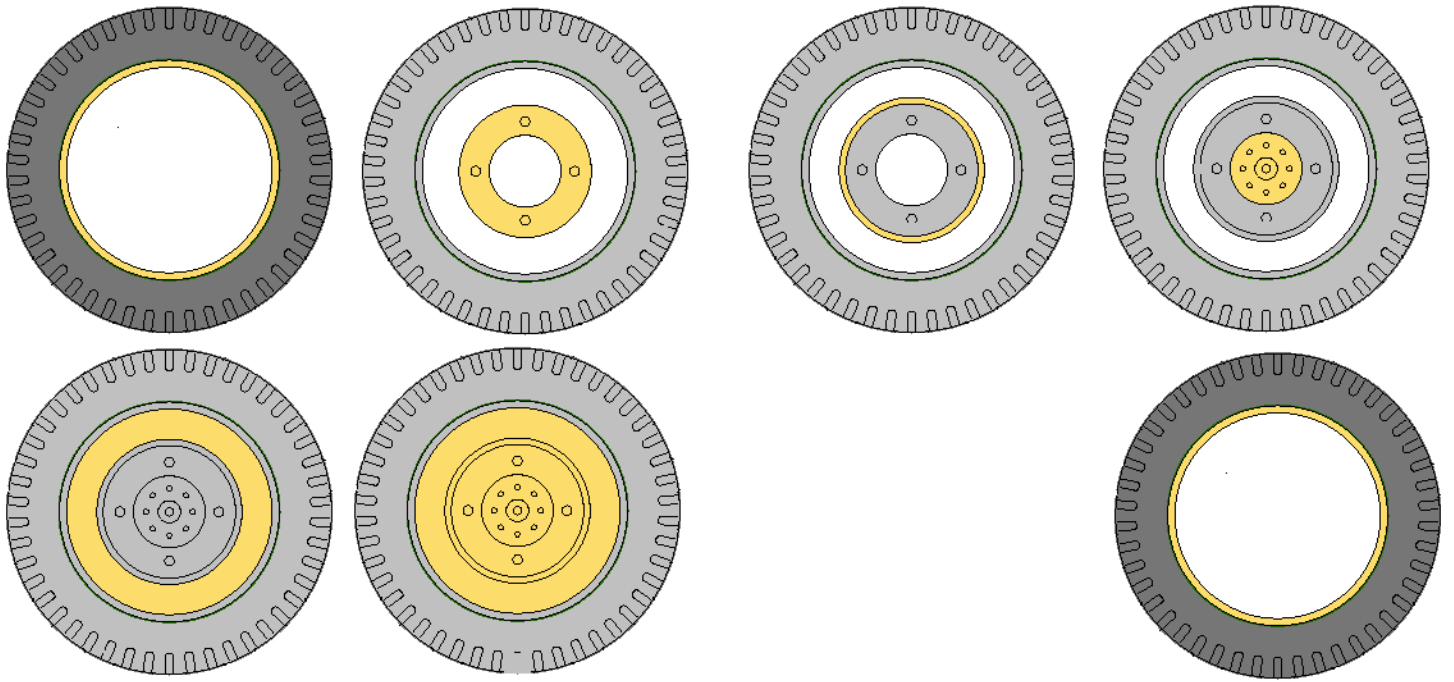


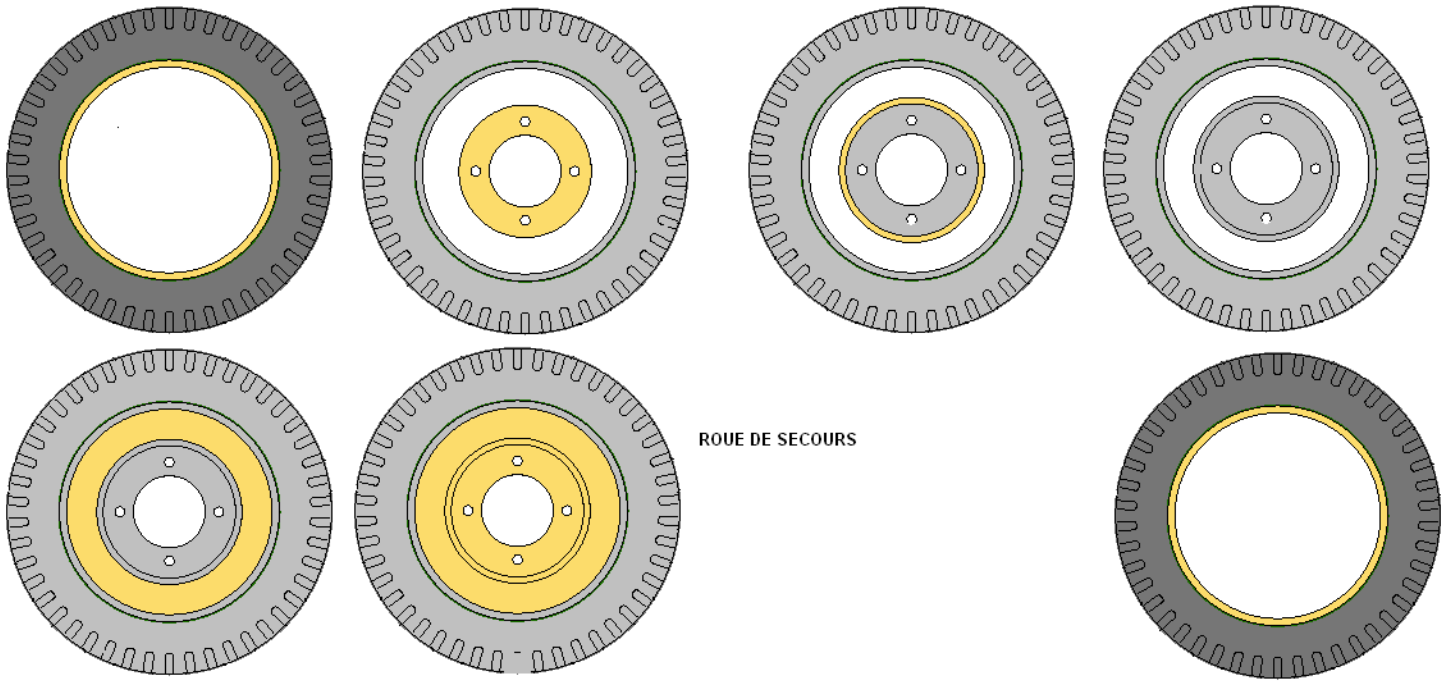
asiento



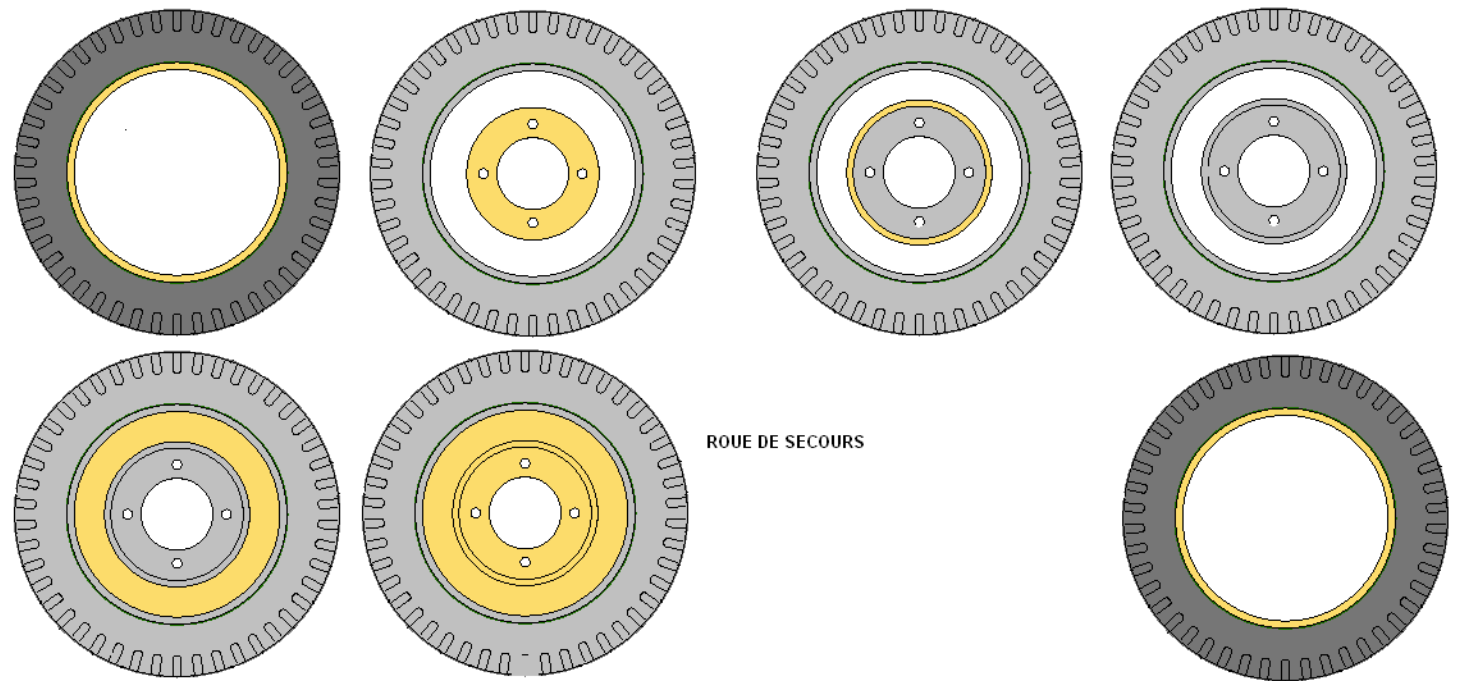
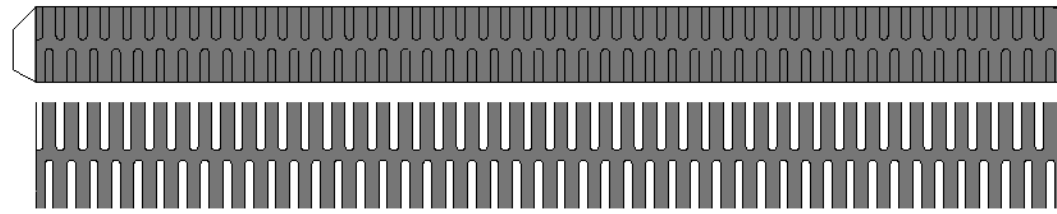
EGAR , DIAMETRO = ○



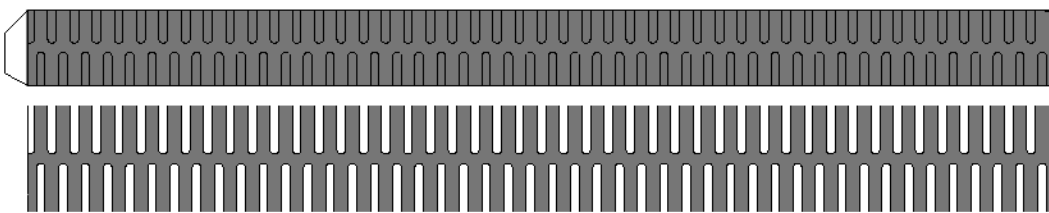


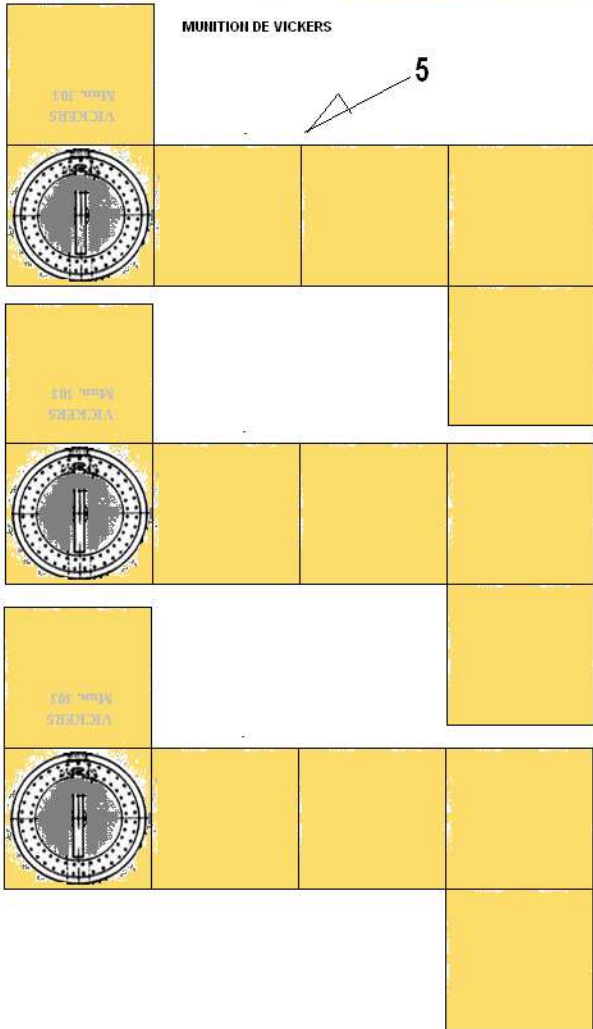


ROUE DE SECOURS

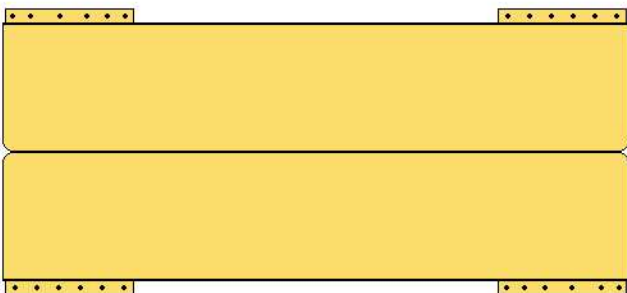
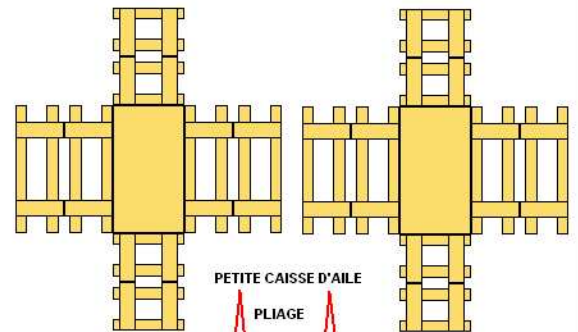
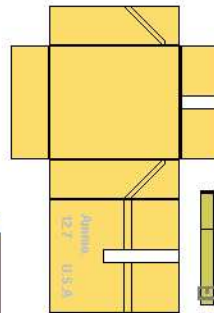
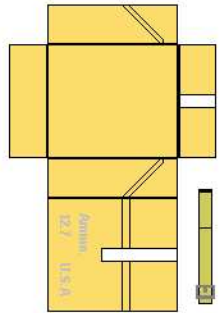
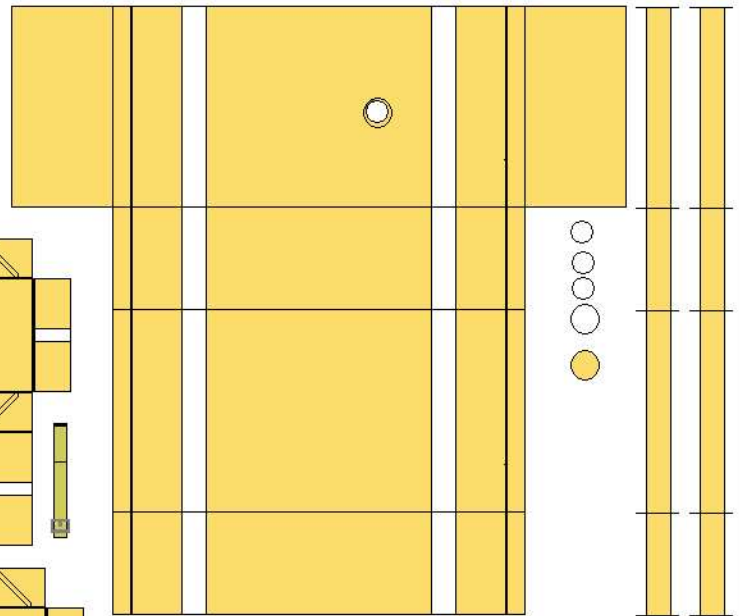
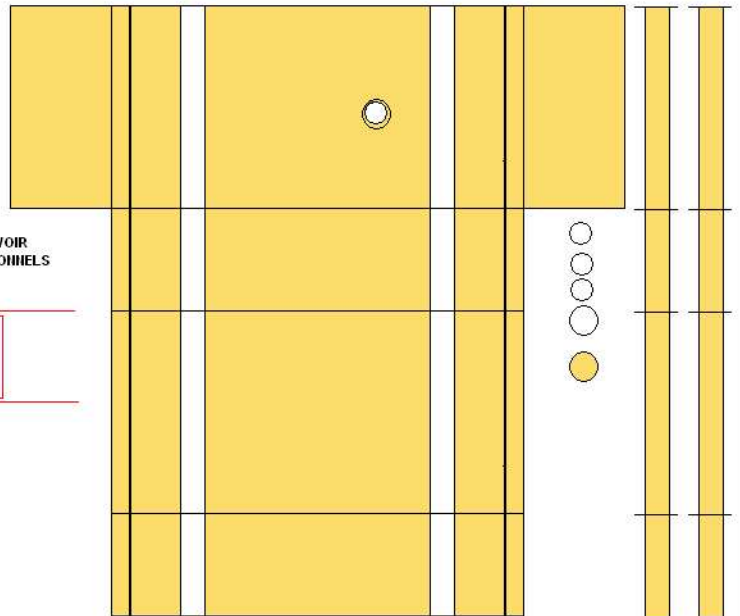


ROUE DE SECOURS





RESERVOIR
ADDITIONNELS



PLAQUE DE BLINDAGE ARRIERE

